

If your O.R. could have nothing else- consider these basic, versatile products. . .

Donut Head Pads

- Best seller.
- Variety of sizes for optimum positioning.
- Optional polymer lined dish provides premium protection.



40201	Adult	8 OD x 3 ID x 1 3/4"	20.5 OD x 7.5 ID x 4.5 cm
40212	Adult Tall	8 OD x 3 ID x 3"	20.5 OD x 7.5 ID x 7.5 cm
40202	Pediatric	5 1/2 OD x 2 1/4 ID x 1 1/4"	14 OD x 5.7 ID x 3.2 cm
40203	Neo-Natal	3 1/4 OD x 1 1/2 ID x 3/4"	8.3 OD x 3.8 ID x 2 cm
40218	Adult Wide	8 OD x 4 1/2 ID x 1 3/4"	20.5 OD x 11.4 ID x 4.5 cm
40201D	Adult with Center Dish	8 OD x 3 ID x 1 3/4"	20.5 OD x 7.5 ID x 4.5 cm
40202D	Pediatric with Center Dish	5 1/2 OD x 2 1/4 ID x 1 1/4"	14 OD x 5.7 ID x 3.2 cm
40203D	Neo-Natal with Center Dish	3 1/4 OD x 1 1/2 ID x 3/4"	8.3 OD x 3.8 ID x 2 cm



Action® O.R. Overlay, Small

- Also known as the Hip Pad.
- Most versatile size for maximum utility.
- Use with Model 40100 or 40103 for full table coverage.

40105	20 x 20 x 1/2"	50.8 x 50.8 x 1.3 cm
--------------	----------------	----------------------

Ulnar Nerve Protector

- Protects ulnar nerve while allowing full access to arm.
- Convenient, quick hook-and-loop attachments.



40304	Small	15 3/4 x 6 x 1/2"	40 x 15 x 1.3 cm
40304L	Large	19 x 8 1/2 x 1/2"	48 x 21.6 x 1.3 cm



Roll Covers

- Wraps around staph check-type rolls your facility already has.
- Upgrade basic chest rolls for pressure redistribution.
- Features hook-and-loop attachments.

40600	Chest Roll Cover	18 x 18 x 1/2"	46 x 46 x 1.3 cm
40601	Axillary Roll Cover	17 x 12 x 1/2"	43 x 30.5 x 1.3 cm

Patient Positioners

- Versatile positioners eliminate use of old-fashioned sandbags.
- Polymer positioners are a good solution to unsafe rolled towels, IV bags and sandbags.

40602	Small	10 x 4 1/2 x 2"	25.4 x 11.4 x 5 cm
40605	Large	14 x 4 1/2 x 2"	35.5 x 11.4 x 5 cm
40615	Extra Long	18 x 4 x 2"	46 x 10 x 5 cm



Heel Support

- Secure and protect heel area without hook-and-loop attachment.
- Channel in back of cup cradles patient's Achilles tendon area.



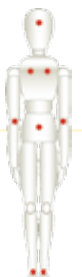
40502	6 x 3 1/4" x 1 3/4"	15 x 8.3 x 4.5 cm
--------------	---------------------	-------------------



Resurfacing Kits

Quick and easy resurfacing of minor cuts or abrasions on any polymer surface.

KIT002	4 x 4" 10 x 10 cm
KIT003	36 x 4" 91 x 10 cm





Pediatric Positioner Set

- Multipurpose set protects neonates to toddlers during a wide variety of procedures.
- Rectangular pad with indented channel allows chest expansion.
- Pediatric horseshoe pad (Model 40205) supports head in prone or lateral position.
- Two different size chest rolls (Model 40642 and 40646).

40614 Rectangular Pad: 20 x 9 x 2"

50.8 x 22.9 x 5 cm



Candy Cane Stirrup Pad Set

- Minimize risk of skin breakdown due to metal cane contact.
- Protects the peroneal nerve during lithotomy procedures.
- Eliminates tedious wrapping, unwrapping and re-wrapping.
- Use with Action® Heel Protectors, Model 40401.

40501 (Set of 2)

28 x 2"OD

71 x 5 cm OD



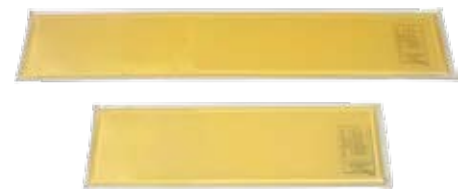
Knee Crutch Pads

- Three sizes for maximum versatility.

40402 Small 11 x 9 x 3/8" 27.9 x 22.9 x .95 cm

40403 Medium 17 x 11 x 1/4" 43 x 27.9 x .6 cm

40404 Large 22 x 20 x 1/2" 56 x 50 x 1.3 cm



Armboard Pads

- Protect patient's bicep, elbow, and forearm areas.
- Use on standard armboard table extensions.

40300 Short 15 x 4 x 1/4" 38 x 10 x .6 cm

40301 Long 24 x 4 1/2 x 3/8" 61 x 11.5 x .95 cm

40309 Wide Short 15 x 6 1/2 x 1/4" 38 x 16.5 x .6 cm

40308 Wide Long 24 x 6 1/2 x 3/8" 61 x 16.5 x .95 cm

